

# Farm for Sale

Busey Farm Brokerage



## CHAMPAIGN COUNTY – FARM FOR SALE

### King Farm

8.0 +/- Taxable Acres

Raymond Township, Champaign County, Illinois

#### Location

The King Farm is located on the south side of Longview, IL along the west side of CR 2100E

#### Abbreviated Legal Description

PART OF THE SE1/4 SE1/4 OF SECTION 33, TOWNSHIP 17 NORTH, 10 EAST, CHAMPAIGN COUNTY, ILLINOIS

#### Contact Information



Eric L. Roberts

Listing Broker

O: 217-351-6555

C: 217-772-1082

eric.roberts@busey.com

[busey.com](http://busey.com)

3002 W. Windsor Rd., Champaign, IL 61822

Phone: 217-353-7101 Fax: 217-351-2848

Steve Myers: Managing Broker

O: 309-962-2901 C: 309-275-4402

steve.myers@busey.com

#### Listing Price

**8.0 Acres x \$10,000/Ac = \$80,000.00**

#### Lease/Possession

The farm is lease free for the 2023 crop year.

#### Champaign County FSA Data

Farm #	Tract #	
Total Acres:	8.0	Tillable Acres: 8.0
Corn Base Acres:		Soybean Base Acres:
HEL/Wetlands:	N/A	Program: N/A

#### PLC Payment Yields

Corn Yield:	N/A	Soybean Yield:	N/A
-------------	-----	----------------	-----

#### Real Estate Tax Information

Parcel ID#	Acres	2021 Assessed Value	2021 Taxes Payable 2022
21-34-33-476-001	3.0	\$2,240.00	\$195.42
21-34-33-477-004	5.0	\$3470.00	\$303.44

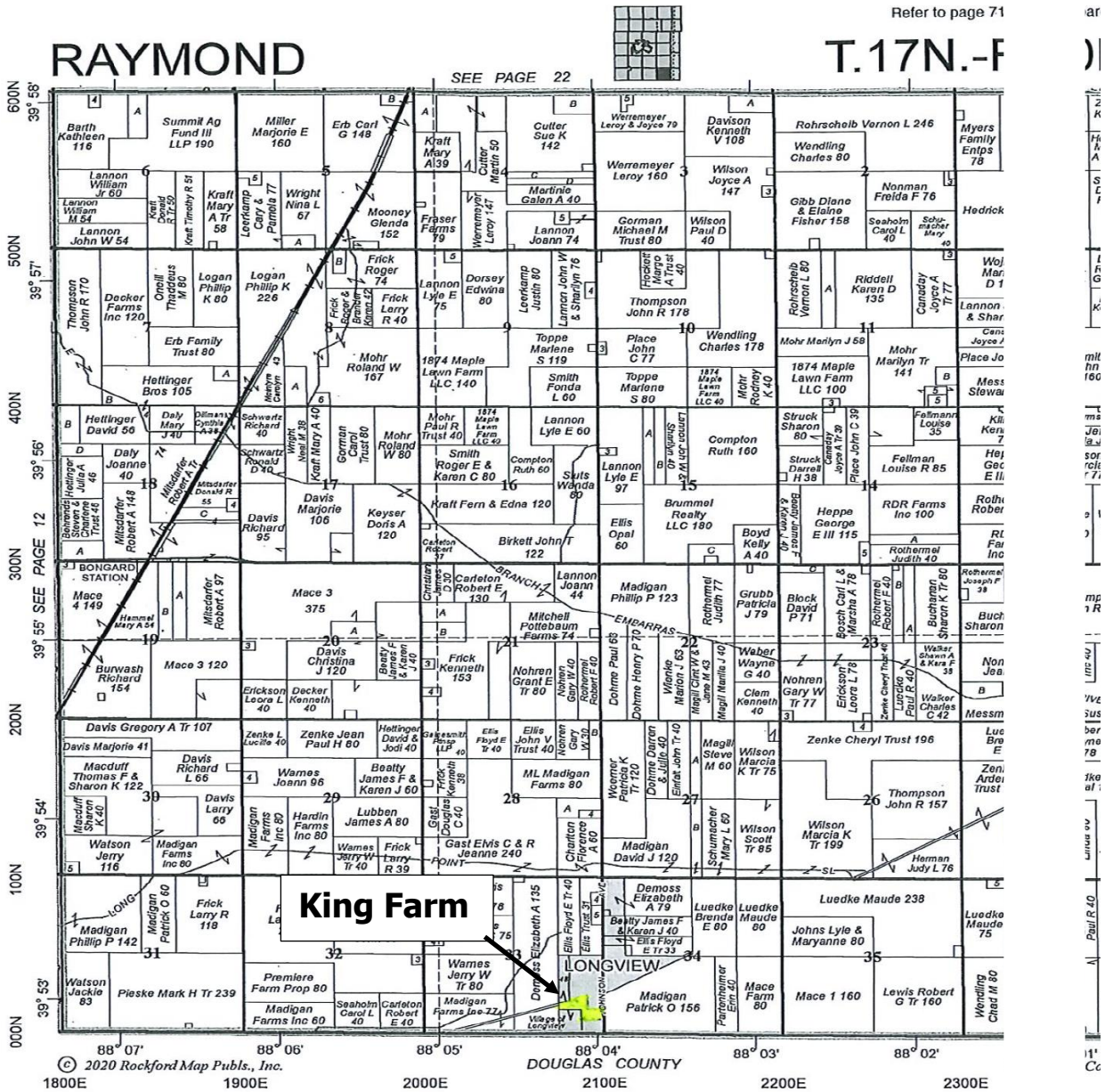
#### Yield information

The farm has been in a crop rotation of corn, soybeans, and wheat. It is currently planted in corn. No yield data available.

**Disclaimer:** The information contained in this brochure is considered accurate. It is subject to verification and no liability for errors or omissions is assumed. There are no warranties, expressed or implied, as to the information herein contained, and it is recommended that an independent inspection of the property be made by all buyers.

**Agency:** Busey Farm Brokerage, a division of Busey Bank, its agents and representatives, are agents of the Seller

# Plat Map



Reprinted with permission of Rockford Map Publishers, Inc.



Licensed Real Estate Broker Corporation  
Busey Farm Brokerage

Phone: 217-353-7101

Fax: 217-351-2848

**Disclaimer:** The information contained in this brochure is considered accurate. It is subject to verification and no liability for errors or omissions is assumed. There are no warranties, expressed or implied, as to the information herein contained, and it is recommended that an independent inspection of the property be made by all buyers.

**Agency:** Busey Farm Brokerage, a division of Busey Bank, its agents and representatives, are agents of the Seller

# Aerial Map and Soil Information



Soil Code	Soil Description	Estimated Acres	Percent of Field	Corn Bu/A	Soy Bu/A	Crop Productivity Index for optimum management
152A	Flanagan silt loam	2.77	32.9%	194	63	144
154A	Drummer silty clay loam	5.64	67.1%	195	63	144
<b>Weighted Average</b>				<b>194.7</b>	<b>63.0</b>	<b>144.0</b>



Licensed Real Estate Broker Corporation

Steve Myers  
 Managing Broker  
 Office: (309) 962-2901  
 Cell: (309) 275-4402  
[steve.myers@busey.com](mailto:steve.myers@busey.com)

Eric L. Roberts  
 Listing Broker  
 Office: (217) 351-6555  
 Cell: (217) 772-1082  
[eric.roberts@busey.com](mailto:eric.roberts@busey.com)

Hans Carmien  
 Broker  
 Office: (217) 351-2767  
 Cell: (217) 840-7171  
[hans.carmien@busey.com](mailto:hans.carmien@busey.com)

**Disclaimer:** The information contained in this brochure is considered accurate. It is subject to verification and no liability for errors or omissions is assumed. There are no warranties, expressed or implied, as to the information herein contained, and it is recommended that an independent inspection of the property be made by all buyers.

**Agency:** Busey Farm Brokerage, a division of Busey Bank, its agents and representatives, are agents of the Seller